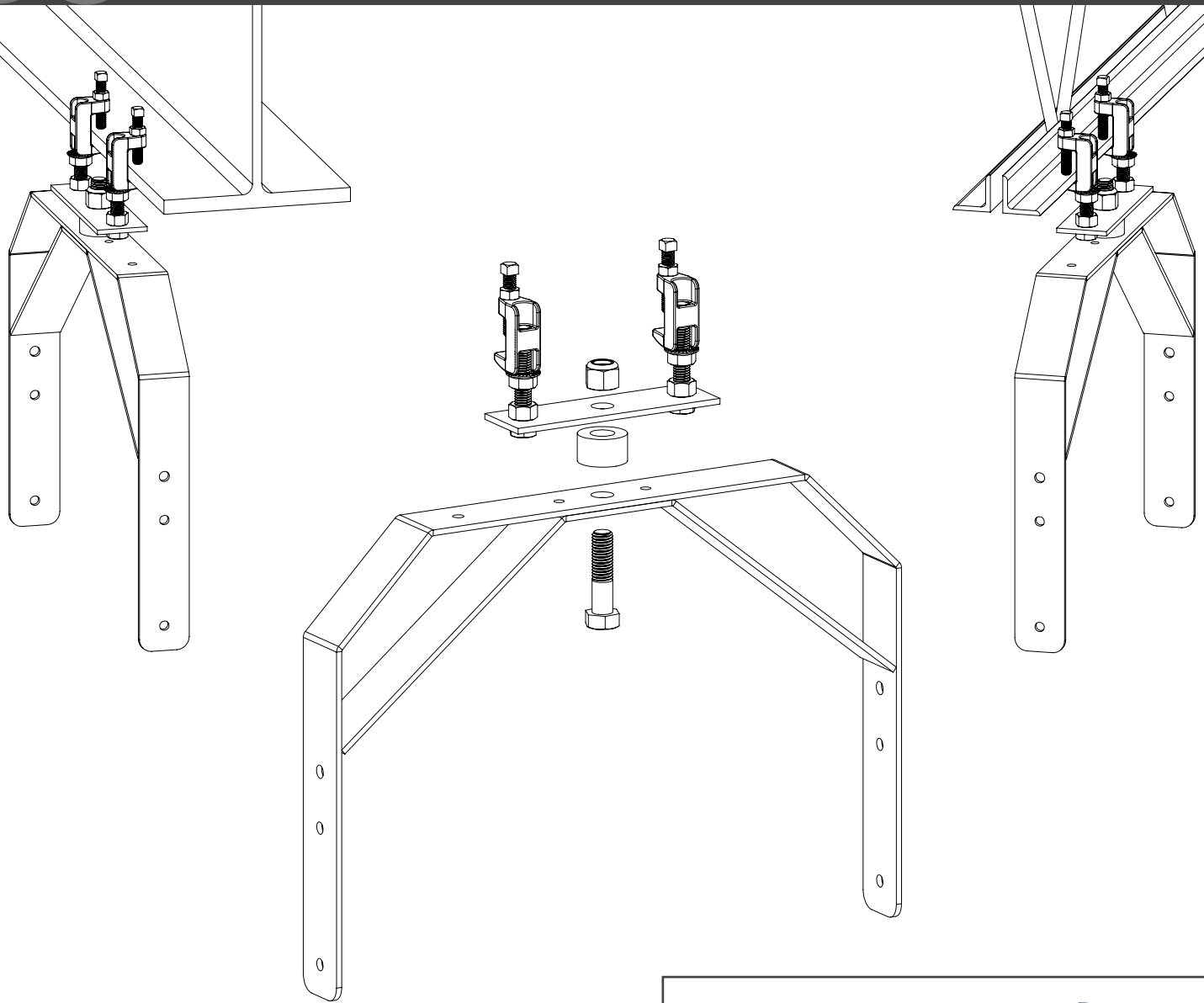


BC

BEAM CLAMP ASSEMBLY



1. Place Beam Clamp Mount on webbing or flange.
2. Finger tighten set screws then turn additional $\frac{1}{4}$ to $\frac{1}{2}$ turn to ensure proper engagement. **Note:** Set screws must engage the sloped side of the I-Beam. Beam Clamps can be reversed if needed.
3. Tighten jam nut to prevent loosening from vibrations.
4. Mount fan and yoke using provided 5/8" bolt.
5. Loop safety cable over beam and through yoke.
6. Feed ends of cable into saddle clamps and tighten.

Note: Safety cable not pictured.

