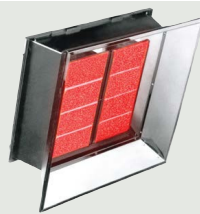
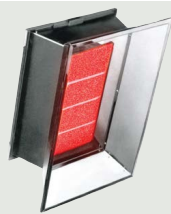


HIGH INTENSITY HEATERS

K-Series - Infrared



30,000 - 60,000 BTUH

70,000 - 100,000 BTUH

110,000 - 160,000 BTUH

160,000 - 200,000 BTUH

MODEL	MBTUH NAT	MBTUH LP	MODEL	MBTUH NAT	MBTUH LP	MODEL	MBTUH NAT	MBTUH LP	MODEL	MBTUH NAT	MBTUH LP
K-30	30		K-70	70	70	K-110	110		K-160		160
K-35	35		K-75	75	75	K-120	120	120	² STAGE STK-160/80		160/80
K-40	40		K-80	80	80	² STAGE STK-120/80		120/80	K-175	175	
K-45	45		K-85	85	85	K-125	125		K-200	200	
K-50	50	50	K-90	90	90	K-130	130		² STAGE STK-200/100	200/100	
K-55	55		² STAGE STK-90/45		90/45	K-135	135				
K-60	60		K-95	95		K-150	150				
Note: Width or Length of K-30 through K-60 models can be parallel to floor.			K-100	100		² STAGE STK-150/100	150/100				
			² STAGE STK-100/50	100/50		*K-160	160				
CLEARANCES TO COMBUSTIBLES			CLEARANCES TO COMBUSTIBLES			CLEARANCES TO COMBUSTIBLES			CLEARANCES TO COMBUSTIBLES		
Side of Heater		30"	Side of Heater		36"	Side of Heater		46"/ *48"	Side of Heater		48"
Back of Heater		30"	Back of Heater		30"	Back of Heater		33"	Back of Heater		33"
Top of Heater:			Top of Heater:			Top of Heater:			Top of Heater:		
Mounted 0° - 29°		60"	Mounted 0° - 29°		62"	Mounted 0° - 29°		64"/ *68"	Mounted 0° - 29°		68"
Mounted 30° only		48"	Mounted 30° only		50"	Mounted 30° only		58"/ *68"	Mounted 30° only		68"
w/ Heat Shield 0° - 30°		34"	w/ Heat Shield 0° - 30°		38"	w/ Heat Shield 0° - 30°		N.A.	w/ Heat Shield 0° - 30°		N.A.
Below Heater:			Below Heater:			Below Heater:			Below Heater:		
Standard Reflector		80"	Standard Reflector		105"	Standard Reflector		125"/ *140"	Standard Reflector		140"
Parabolic Reflector		110"	Parabolic Reflector		135"	Parabolic Reflector		165"/ *180"	Parabolic Reflector		180"
OVERALL DIMENSIONS			OVERALL DIMENSIONS			OVERALL DIMENSIONS			OVERALL DIMENSIONS		
Length		16 3/4"	Length		25 1/4"	Length		33 7/8"	Length		42 1/2"
Width (w/controls)		28 5/8"	Width (w/controls)		28 5/8"	Width (w/controls)		28 5/8"	Width (w/controls)		28 5/8"
Depth		8 3/4"	Depth		8 3/4"	Depth		8 3/4"	Depth		8 3/4"
Radiating Surface		173 sq."	Radiating Surface		346 sq."	Radiating Surface		519 sq."	Radiating Surface		692 sq."
Shipping Weight		30 lbs.	Shipping Weight		(K) 36 lbs. ² STAGE (STK) 41 lbs.	Shipping Weight		(K) 49 lbs. ² STAGE (STK) 54 lbs.	Shipping Weight		(K) 62 lbs. ² STAGE (STK) 67 lbs.

CONTROL OPTIONS

CONTROL SUFFIX	GAS	IGNITION	SHUT-OFF	VOLTAGE*	MAX. POWER CONSUMPTION	PILOT
² STAGE STN	Natural	Direct Spark	100%	24 Volt	12 Volt Amps	None
² STAGE STL	Propane	Direct Spark	100%	24 Volt	12 Volt Amps	None
TAN	Natural	Manual	100%	Millivolt	None	Constant
TAL	LP	Manual	100%	Millivolt	None	Constant
DSAN	Natural	Direct Spark	100%	115 Volt	6 Volt Amps	None
DSAL	LP	Direct Spark	100%	115 Volt	6 Volt Amps	None
QSAN	Natural	Direct Spark	100%	24 Volt	6 Volt Amps	None
QSAL	LP	Direct Spark	100%	24 Volt	6 Volt Amps	None

SYSTEM INFORMATION

Manifold Operating Pressure
 Nat. Gas: 6" WC LP Gas: 10" WC

Minimum Inlet Pressure
 Nat. Gas: 7" WC LP Gas: 11" WC

Maximum Inlet Pressure
 Nat. Gas: 14" WC LP Gas: 14" WC

Gas Inlet Connection 1/2" FPT

* MUST USE 2-STAGE THERMOSTAT FOR 2-STAGE OPERATION. SINGLE STAGE THERMOSTAT WILL ACTIVATE THE FIRST STAGE ONLY.