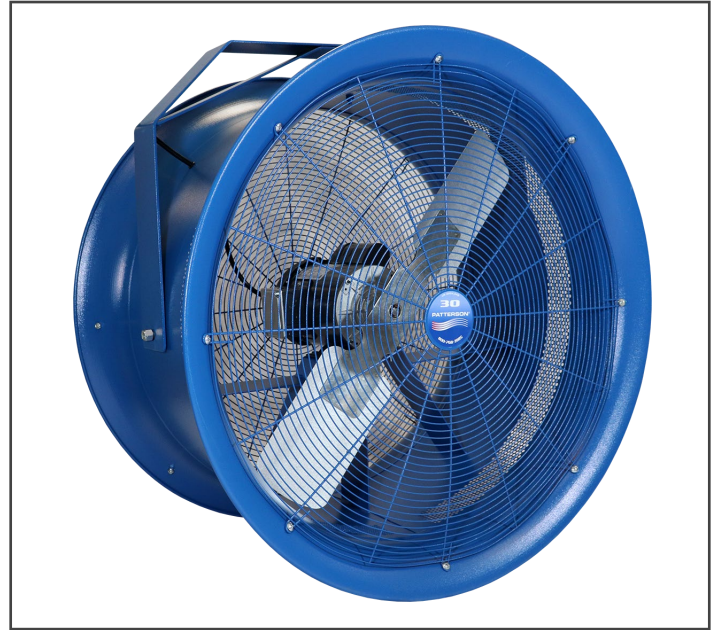


# YM

# YOKE MOUNT ASSEMBLY



There are many acceptable methods for hanging a Patterson yoke mount fan. The most important things to remember are that the yoke must be securely connected to a solid structure and that all materials used to hang the yoke and fan must be rated for this type of rigging and workload. Below is what we consider to be the simplest method of fan suspension. Feel free to improvise, but please use caution and good judgment.

1. Secure the "U" shaped yoke to the object from which you intend to mount the fan. Use a 5/8" bolt, a 5/8" nut and (2) 5/8" washers. Tighten the nut onto the bolt using a 15/16" bolt end wrench and ratchet with 15/16" socket.
2. The factory assembled fan head fits inside of the "U" shaped yoke, the threaded studs on each side of the fan fit through the predrilled holes on the "U" shaped yoke. Secure the factory assembled fan head to the "U" shaped yoke with the supplied nuts. Mount the factory assembled fan head so that the motor mount is below the motor.
3. A safety cable installation is recommended. Use a length of chain or cable to secure the fan to a solid surface and attach to the fan. Make sure cable or chain is rated for the weight and purpose of securing the fan.

